

>Creating and managing statistic files

The capacity and potential of this aid, together with the simple use which internet network allows, leads one to consider it not only as a product, but as a project and a workshop for the production of local statistical information. The design of a customised database creation is achieved through the integration of one's data with the wealth of data available in the database, thereby creating an "original" system for all users.

>Updating

An editorial committee constantly updates the basic statistical information, by adding new functions, methodological and technological innovations in view of consumer suggestions.

Geo Web Starter is the convergence of all the statistical information kept at the Istituto Guglielmo Tagliacarne; an unlimited inventory of data, documents and meta-information useful for the study and analysis of the local, national, European and world wide economy.

Minimum system requirements:
 hardware: Pentium IV or following – 512 MB Ram
 Internet connection
 software: Microsoft Windows 2000 and XP Pro
 Microsoft Explorer 6.0 and following

The GIS data are all in ESRI file format
 The geographical data utilised are those in the software package
 Geo Business of GIS Italia and ESRI Italia



>A sole tool for the compendium of information always up to date

Geo Web Starter is an innovating web platform created to respond to the needs in the analysis of local economic situations of members. It consists of statistical and cartographical databanks that contain information on different sectors from the ISTAT 2001 census: municipal, provincial, regional, European and other countries. It is **designed for local authorities and public and private administrations** that operate nationally and that have a need for information and local statistics.

>The network for statistics

Geo Web Starter is set up as a shared work environment for management, processing and representation of statistical information. It allows qualified consumer users - with progressive access rights and with different analysis needs - to create and manage customised files, which are shared and quick to consult.



Geo Web Starter, developed on platform ST Stat Portal, is a registered trademark produced by Istituto Guglielmo Tagliacarne with the information and technological collaboration of Sistemi Territoriali.

For further information
 Istituto Guglielmo Tagliacarne
 Via Appia Pignatelli, 62 - 00178 Roma
 tel. 06 780521 - Fax 06 78052352
 www.tagliacarne.it/gws

Contents and use:
 Letizia Bani
 l.bani@tagliacarne.it
 (06 78052203)

Dario Maiolino
 d.maiolino@tagliacarne.it
 (06 78052211)

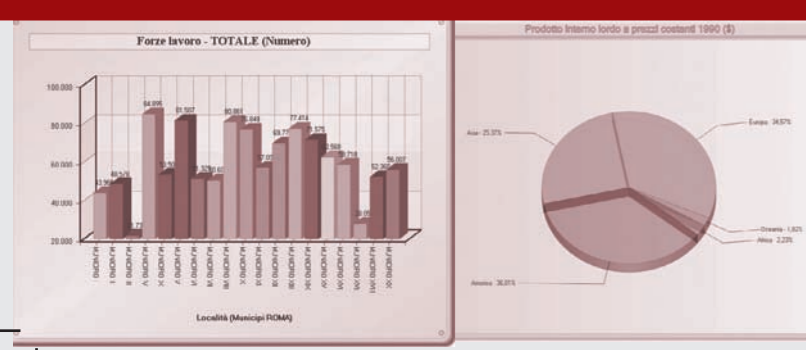
Commercial department:
 Roberto Piana
 r.piana@tagliacarne.it
 (06 78052306)



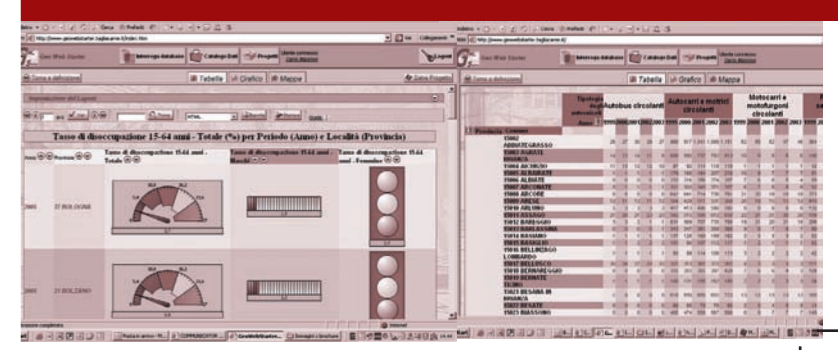
The Quality System of Istituto Guglielmo Tagliacarne is certified ISO 9001:2000



Agosto 2006 Translated by Patricia Perini



The start to creative statistics



>on line
technological
innovation

>over 100 million items of information...
...shared on line

GeoWebStarter: *the basic version*

Allows

- Database consultation and the calculation of new indicators starting from a local selection;
- Graphic displays, printing and exporting schedules, generated graphs and thematic maps;
- The creation of customised projects, shared with other consumers in the same Organisation;
- Flag documentation and project through "data catalogue";
- Comparative analysis of one or more indicators, statistical calculation of synthesis (sum, average, standard deviation, minimum, maximum, etc.);
- Advanced reported functionality (management panels, comparative territorial reports, multi-dimensional reports, etc.);
- The publication of electronic newsletters in internet automatically created for the circulation of information;
- The introduction of personal data base and of specific territorial aggregations.

Customisation and configuration through

- Specific database supplier;
- Reclassification of information;
- The enrichment of "data catalogue";
- Management of profiles and consumer rights;
- Adaptation of the work environment.

GeoWebStarter: *available database*

originate from

1. the original production of Istituto Guglielmo Tagliacarne (G.D.P., disposable income and family consumption, total agricultural output, infrastructure rates, etc.);
2. the ISTAT production and important national and international sources, for example:

Agea
Aci
Anci - Cnc
Apat
Artigiancassa
Banca d'Italia
Cassa DD.e PP.
Grtn - Terna
Eurostat
Infocamere

Isvap
Ministeri:
Economia e Finanze,
Sviluppo Economico,
Interno,
Lavoro e
Previdenza Sociale,
Solidarietà Sociali,
Salute,
Infrastrutture,
Trasporti;

Monopoli di
Stato-AAMS
Onu
Rai
Siae
Snam
Unacoma
Unioncamere

- 3 - special data processing produced in our institute by specific requests.

GeoWebStarter: *geographical browser*

Through our map server, which contains graphical maps based on national level, European and other countries and special thematic materials, consumers have access to different functions for their analyses.

The basic maps that refer to local, provincial and regional administrations are updated annually since 1991, while those pertaining to the census sectors, to 2001, the European Areas or to other countries are included in the maps available for the last year.

The information strategy consists of:

- Regional administrative limits set by the provinces and Italian municipalities and the ISTAT 2001 census section;
- The European Administrative Area Nuts2-Nuts3 limits;
- World Administrative limits;
- Main roads;
- Main railways;
- Main hydrograph;
- Main place - name.

GeoWebStarter: *offers*

In relation to the number of consumers and the customised requests, we offer annual solutions or multi-year solutions regarding:

- 1 access to the platform;
- 2 database and constant updating;
- 3 information on chosen data;
- 4 the loading and management of own data;
- 5 precise geo reference of personal data files;
- 6 the creation of sub local aggregations;
- 7 assistance and training of consumers.

Once the information is selected and withdrawn, it is possible to visualise, print and instantly export the data in table, graphical and/or cartographical form.

The data is provided under flag forms that have already been elaborated, to permit an evaluation of the concentration of certain phenomenon.